



# Company Presentation

- A new concept of customer satisfaction
- Quality innovation
- Improvement of industrial structure



## Contents



1. **Company Introduction**
2. **History and Certification**
3. **Management Philosophy**
4. **Corporate Organization**
5. **Products Introduction**
6. **Product Photos**
7. **Business Experience list**
8. **Manufacturing Flow chart**
9. **Manufacturing Process**
10. **Manufacturing Facilities**
11. **Facilities Photos**
12. **Measuring Instrument**
13. **Company Certificate**

## 1. Introduction

Company name	SEDONG pre & mfg co., Ltd.	President	Mr. Hong kyung- pyo
Address	<b>Head : 1176-1, Naesam-ri, Juchon-myeon, Gimhae-city, Gyeongnam-do, Korea.</b> <b>Branch : 244-10,11,20 Anha-ri, Hanlim-myeon, Gimhae-city.</b>		
Type of business	Manufacturing / Components of Main diesel engine...		
Homepage	www.sedongpm.com		
Founded year	1989 year	Annual sales	8 billion won
Establishment type	Corporation	Manpower	60 employee
Factroy scale	<b>Head : Ground / 8,926m2 Building / 2,684m2</b>	Tel. no.	055) 338-7592
	<b>Branch : Ground / 3,967m2 Building / 1,322m2</b>	Fax no.	055) 338-6187
Business license no.	622-81-15578	Contact person	

## 2. History and Certification

### Brief History

1989 year	Established under the name of JEIL Precision co.
1993 year	Moved to a larger facility located in Sa sang-gu, Busan.
1997 year	Changed as a corporate body under the name of JEIL Pre. & Mfg. co., ltd.
2000 year	Registering Hyundai Heavy Industries and Doosan Heavy Industries Partners and Opening Trade
2004 year	Changed under the name of SEDONG Precision co., ltd.
2006 year	Extended the factory building
2012 year	Branch opening for Han-lim factory
2014 year	Supplier registration for Posco e&c

### Certification / Reward

1999 year	Certified Quality assurance system ISO 9001 : KS A 9001
2001 year	Nominated for excellent company by Doo-san engine co., ltd.
2006 year	Received the excellent performance of 3C two times and a quality innovation award by Doo-san engine co., ltd.
2007 year	Certified Single-PPM
2007 year	Certified INNO-BIZ A class
2007 year	Received a first quality award by Doo-san engine co., ltd.
2009 year	Certified Venture Enterprise
2014 year	Certified Environmental Management System ISO14001 : 2004

### 3. Management Philosophy

#### Management Philosophy



#### POLICY of Q.M

- A new concept of customer satisfaction
- Quality innovation
- Improvement of industrial structure

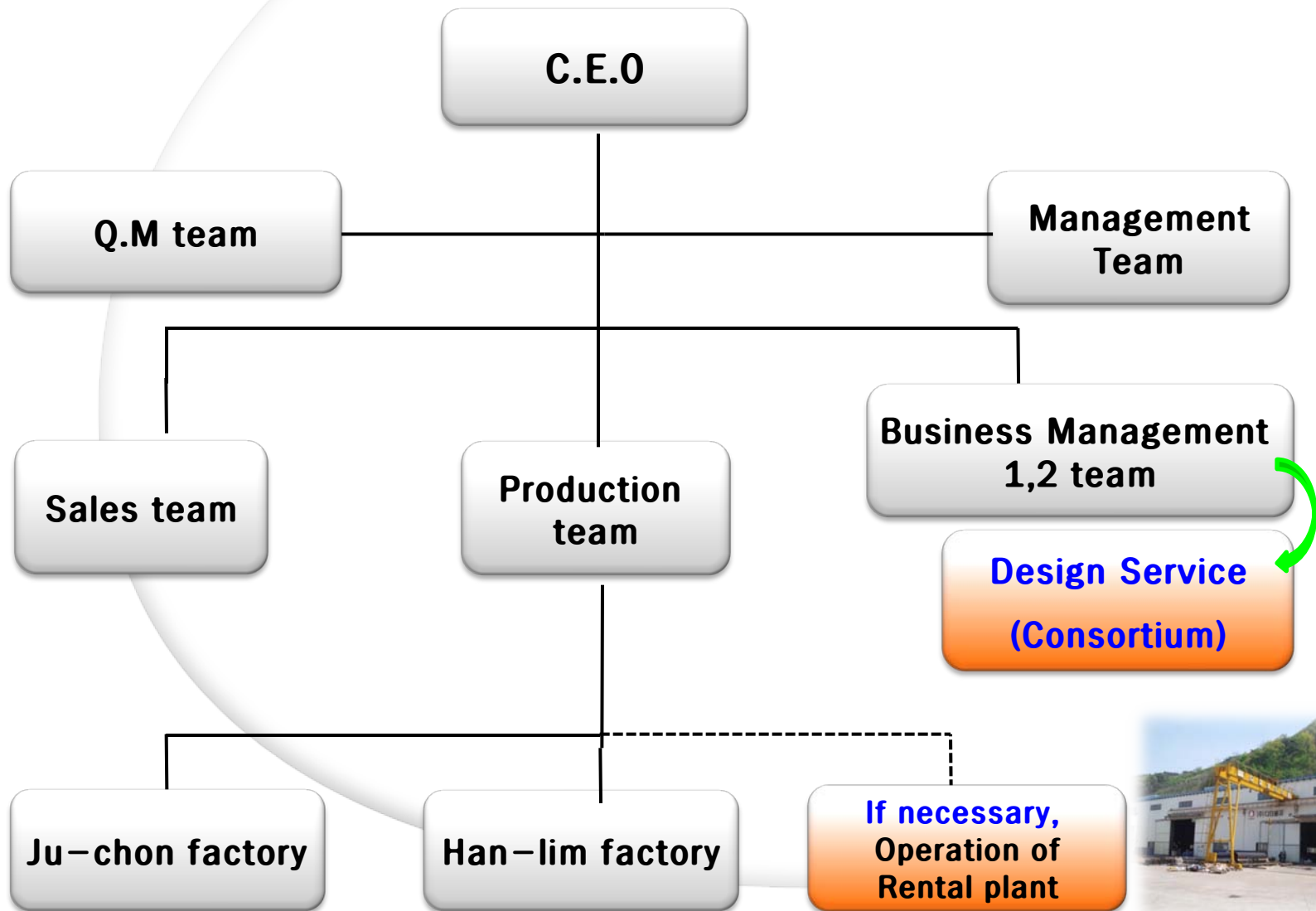
#### AIM of Q.M

**名品**

Making  
**Masterpiece**



## 4. Corporate organization



## 5. Products introduction (1)

### ▶ **Diesel Engine piping**

- **Piping (including ship class) Fabrication & Installation**

### ▶ **Main diesel Engine Components**

- **Protective tube**
- **Pipe for cooling insert**
- **Spraying plate with oil tube**
- **Tank.. (Drain box, Leakage tank, Cleaning tank ...)**
- **Pipe Support**

## 5. Products introduction (2)

### ▶ **Power piping (ASME B31. 1 Code)**

- **Carbon steel piping (A106C etc)**
- **Low Alloy steel piping (A335–P11, P22)**
- **High Alloy steel piping (A335–P91, P92)**
- **Stainless steel piping (Duplex, Sus 316/L etc)**
- **Titanium, Aluminum, Cooper piping**



## 5. Products introduction (3)

### ▶ **Iron & Steel making plant.**

- **Water cooled beam**
- **Cooling duct**
- **Cooling Spray header on the Work roll**
- **Main standpipe on the Gas collecting**

### ▶ **Others**

- **Transfer car**
- **Premelt Pot**
- **Steel structure**

## 6. Product photos (1)

### Piping of Class & Non class for Main diesel engine





## 6. Product photos (2)

### Main steam piping of GE out-sourcing on the steam turbine (High alloy : A335 P91)





## 6. Product photos (3)

### Water cooled beam of Posco e&c (End user : Posco-Indonesia)



### Water cooled beam of Posco e&c (End user : Posoc-Pohang)





## 6. Product photos (4)

### PLEM piping & pile for Refurbishment of a SPM Buoy (End user : S-oil)



### KNOC PLEM piping (End user : S-oil)



## 6. Product photos (5)

### P.E Coating piping



### Cooling spray Header on the Work roll





## 6. Product photos (6)

### External power piping (Pohang by product Gas CCPP #1,2 : BHI)





## 6. Product photos (7)

### Internal power piping for Boiler (Brazil CSP / ASME Sec I)



### Fire extinguishing piping line / etc..





## 6. Product photos (8)

### Mashinloc power plant Expansion project Steam Blowing piping of Posco e&c



## 6. Product photos (9)

### Mashinloc power plant Expansion project Shop fabricated piping of Posco e&c (1/2)





## 6. Product photos (10)

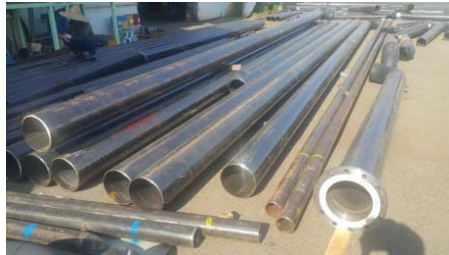
### Mashinloc power plant Expansion project Shop fabricated piping of Posco e&c (2/2)





## 6. Product photos (11)

### SHIN PYEONGTAEK Combined cycle power plant Shop Fabricated piping (1/2)



## 6. Product photos (12)

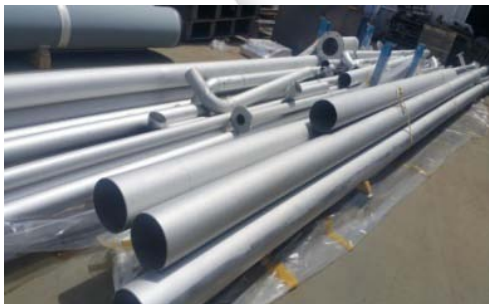
### SHIN PYEONGTAEK Combined cycle power plant Shop Fabricated piping (2/2)





## 6. Product photos (13)

### Stainless steel piping



## 6. Product photos (14)

### Spray Nozzle header (Titanium Gr.2) of Posco





## 6. Product photos (15)

### Main standpipe on the Gas collecting for Iron & Steel making plant



### Cooling duct of Electric furnace for Iron & Steel making plant





## 6. Product photos (16)

Components for Four or Two stroke engine such as **Cooling insert pipe**,  
**Protective tube ...**

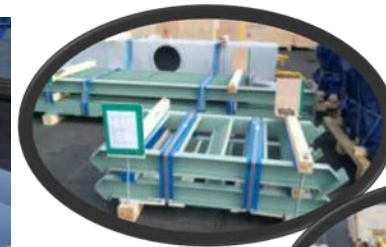


**Transfer car** for Iron & Steel making plant of Posco e&c



## 6. Product photos (17)

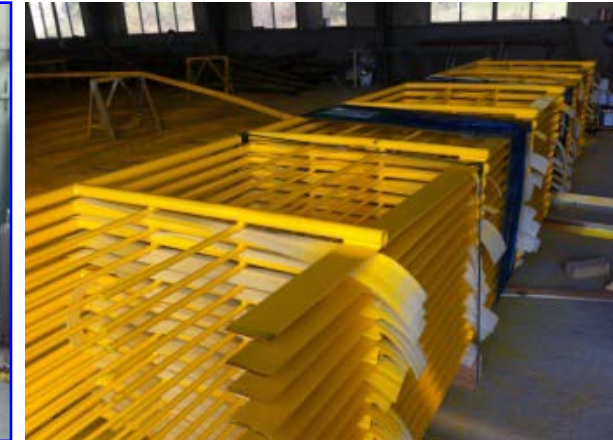
### Premelt pot structure of Posco e&c (Posco-Mexico No. 2 CGL)





## 6. Product photos (18)

### PIPE RACK of Posco e&c etc.

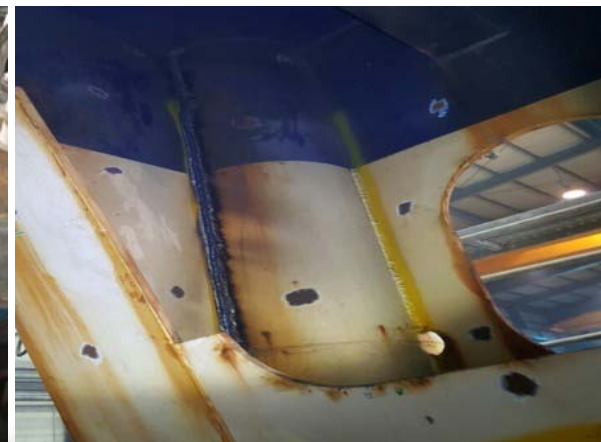


## 6. Product photos (19)

### Clamp of Piping



### Repair work for 울산 Buoy Refurbishment





## 6. Product photos (20)

### Steel structure of Posco e&c (포항 4선재)



## 6. Product photos (21)

### **Motor Bracket of NAKATA / JAPAN (Export)**





## 7. Business experience list (1)

(To End of 2018)

### Detailed Business experience list

	ITEM NAME	EXPERIENCE		CUSTOMER	PERIOD	REMARK
		PJT	TON			
1	ENGINE PIPING (Carbon & Sus steel)	900	10,800	Doosan engine co.	1989~2009	1989년 ~ Present
		114	1,710	Doosan engine co.	2010	Capacity/month : 150ton
		118	1,770	Doosan engine co.	2011	SIZE : 1/8" ~ 24"
		80	975	Doosan engine co.	2012	Max. Pressure : 180bar
		50	700	Doosan engine co.	2013	
		45	650	Doosan engine co.	2014	
		47	633	Doosan engine co.	2015	
		53	745	Doosan engine co.	2016	
		70	842	Doosan engine co.	2017	
		41	590	Doosan engine co.	2018	
	Besides engine piping (Tank류, Pipe for cooling insert, Protective tube...)		50	Doosan engine co.	Every year	
2	Uljin atomic power #1~#4 ENGINE PIPING for Generator	4	12	Doosan Heavy ind. co.	2001~2003	Material : A335-P91
	Gori atomic power #1~#4 ENGINE PIPING for Generator	4	12	Doosan Heavy ind. co.	2001~2002	SIZE : 16" x 40.5t
	Dangjin #1~#6 BFPT Turbine piping)	6	90	Doosan Heavy ind. co.	2003~2004	Max. Pressure : 266bar
	Yangyang #1~#4 GEN Piping #1~#10	4	50	Doosan Heavy ind. co.	2004	
	GE Sourcing Main Steam pipe #1~#10	10	80	Doosan Heavy ind. co.	2002~2004	
	GEN. AUX PIPING #1~#24 (Sus steel piping)	24	120	Doosan Heavy ind. co.	2002~2003	

## 7. Business experience list (2)

3	(Steel making plant) Posco-Indonesia Water Cooled beam	1	130	Posce e&c	2012	
	(Steel making plant) Posco-Phohang 4 rod mill Water Cooled beam	1	96	Posce e&c	2012	
	(Steel making plant) Posco-Phohang 4 rod mill Steel Structure	1	185	Posce e&c	2012	
	(Steel making plant) Posco-Mexico Transfer Car & Premelt pot structure	1	80	Posce e&c	2012	
	(Steel making plant) Phohang Thermoelectric Power Plant #1, 2 HRSG External piping	1	90	Posce e&c	2012	
	(Steel making plant) Posco-Indo ACL Simple parts	1	24	Posce e&c	2012	
	(Steel making plant) Posco-Indonesia Ascension pipes	1	30	Posce e&c	2012	
	(Steel making plant) Steel structure for EGL	3	71	Hyundai Hisco	2012	
	(Ocean) Plem piping	1	30	S-OIL	2012	
4	(Marine shipbuilding) Support structure	1	170	STX marine co.	2013	
	(Energy) SHOAIBA II CCPP General piping	73,000 dia inch		DAELIM ind.co.	2013	
	(Energy) MOROCO OCP SA General piping	60,000 dia inch		DAEWOO e&c	2013	
	(Energy) Pocheon LNG Power plant	27,000 dia inch		Doosan Heavy ind. co.	2013	
	(Energy) Brazil CSP Boiler Internal Power piping (ASME Sec I)		250	Posco e&c	2013	Carbon, Sus, P11, P22
	(Energy) Brazil CSP Power piping (ASME B 31.1)		120	Posco e&c	2013	P91
	(Energy) Seo-incheon Thermoelectric Power Plant #7, #8, #9 General piping	85,000 dia inch		Posco e&c	2013	Rubber lining



## 7. Business experience list (3)

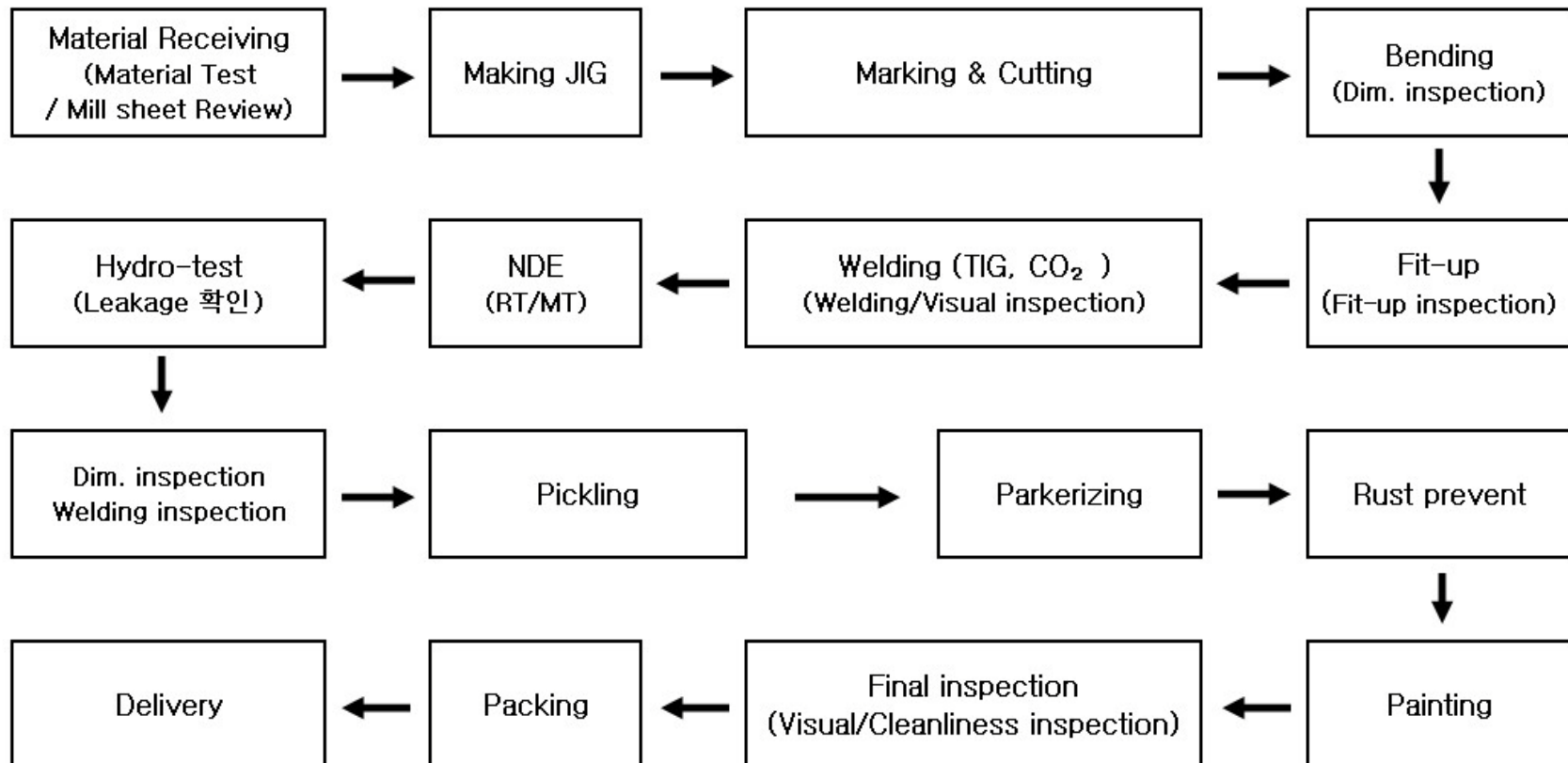
5	(Energy) Posco Combined Thermal power plant #7,8,9 General piping		319	Posco e&c	2014	
	(Energy) Chile Cochane General piping		24	Posco e&c	2014	
	(Steel making plant) Brazil CSP SUPPORT		25	Posco e&c	2014	
	(Steel making plant) Brazil CSP LARGE BORE piping		17	BHI / Posco e&c	2014	
	(Energy) Chile Cochane STEAM BLOWING piping		30	Posco e&c	2014	
	(Energy) ShinBoryeong Unit 1 CANNER PURGE PIPE		150	Doosan Heavy ind. co.	2014	
	(Energy) ShinBoryeong #1,2 Water treatment equip. Piping		12	Posco e&c	2014	
	(Ocean) Duplex pipe spool		25	U-NEX / BARDEX	2014	
6	(Steel making plant) Thailand CGL PIPE RACK		54	Posco e&c	2015	
	(Energy) Peru Fire extinguishing equip. (ANGLE SUPPORT)		38	Posco e&c	2015	
	(Energy) Chile Cochane COOLING TOWER SUPPORT		6	Posco e&c	2015	
	(Steel making plant) Thailand CGL General piping		65	Posco e&c	2015	
	(Steel making plant) Thailand CGL SUPPORT		44	Posco e&c	2015	
	(Steel making plant) Thailand CGL PIPE SPOOL		19	Posco e&c	2015	
	(Steel making plant) Thailand CGL Raw material		227	Posco e&c	2015	
	(Energy) Kumho ACC Aux. Piping		30	BHI	2015	SPIG S.P.A.
	(Energy) Chile Cochane PIPE SPOOL	2,945.5 dia inch		Doosan Heavy ind. co.	2015	
	(Energy) Chile Cochane PIPE SPOOL	2,491.6 dia inch		Doosan Heavy ind. co.	2015	
	REL2141N UREA DOSING SUPPLY UNIT		6	Hanyoung co.	2015	
	(Energy) Moroko 2nd General piping		36	Samsung engineering	2015	
	(Energy) Dominican Republic POTABILIZATION SYSTEM Piping		10	BMP	2015	
	(Shipbuilding) H3084 PIPE SPOOL	1,581 dia inch		Sungdong shipbuilding	2015	
	(Energy) Daelim ShinBoryeong Unit 2 Piping		8	DAELIM ind.co.	2015	
	(Energy) Daelim TNB 3 PIPE SPOOL		14	DAELIM ind.co.	2015	
	(Energy) Bukpyeong Sea water 2nd CWP PIPE SPOOL		40	DAELIM ind.co.	2015	
	(Energy) Chile kele CW/STG PIPE SPOOL		106	Samjin plentek	2015	DOOSAN SKODA POWER

## 7. Business experience list (4)

	(Energy) Suchmon energy Steam blowing piping		45	Posco e&c	2016	
	(Ocean) KNOC PLEM Piping		19	UNEX / S-OIL	2016	
7	(Energy) BADRA CPF PHASE General piping		10	Samsung engineering	2016	
	(Machine) SMS 50MN PRESS PIPE		13	Boschrexroth	2016	
	(Energy) Thailand BCP HRSG piping		17	Posco e&c	2016	
	(Energy) Iran Tehran Oil and BB2 piping		34	Posco e&c	2017	
8	(Energy) Panama Costa Norte LNG Terminal General piping		33	Posco e&c	2017	
	(Energy) Mashinloc power plant Expansion project Shop fabricated piping		871	Posco e&c	2017	
	(Energy) Shin Pyeontaek Combined cycle power plant Shop Fabricated piping		364	Posco e&c	2018	
9	(Steel making plant) Spray Nozzle header	1 set		Posco	2018	Material : Titanium Gr.2
	(Energy) Mashinloc power plant Expansion project Steam Blowing piping		79	Posco e&c	2018	

## 8. Manufacturing System

### FLOW CHART





## 9. Manufacturing process



CUTTING



WELDING PREPERATION



BENDING



MAKING JIG



FIT-UP



WELDING



GRINDING (OUTSIDE)



GRINDING (INSIDE)



WELDING & VISUAL INSPECTION



HYDRO-TEST



PICKLING & PARKERIZING



PAINTING



RUST PREVENTING



FINAL INSPECTION



FINAL INSPECTION



PACKING & DELIVERY

## 10. Manufacturing facilities

### Facilities

#### Bending

20~80A Bending M/C	4set
( <b>CNC 1set</b> , NC 2set)	
100A Bending M/C	2set

#### Piping

<b>CNC cutting M/C</b>	1set
Manual cutting M/C	4set
Facing M/C	2set

#### Welding

Rotator M/C	6set
Positioner	3set
Turnining M/C	3set
Portable Heat-treatment M/C	1set
Welding M/C	60set

#### Machining

Lathe M/C	3set
Milling M/C	1set
Drilling M/C	13set
Beveling M/C	1set

## 11. Main Facilities photo



**CNC Cutting M/C**  
(Up to  $\phi 600$ )



**Turning roller  
with Automatic welding M/C**  
(Up to  $\phi 3000$ )



**Facing M/C**  
(Up to  $\phi 800$ )



**Rotating welding M/C**  
(Up to  $\phi 1000$  etc.)



**Cold Bending M/C**  
(Up to  $\phi 100$  etc.)



**CNC Bending M/C**



## 11. Main Facilities photo



**Hack saw Cutting M/C**  
(Up to  $\phi 1000$ )

## 12. 계측기 보유연왕

### Measuring instrument

#### Out side

Vernier callipers	9EA
Height gage	3EA
Round gage	2EA

#### In side

Micrometer	7EA
Dial gage	4EA
Bore gage	1EA

#### Examination

Pressure Gage	14EA
Hydro. Tester	2EA

#### Others

Film Viewer	1EA
D.F.T Gage	2EA
Amperemeter/Ohmmeter	1EA
Ultrasonic thickness tester	1EA
Magnetic particles tester	1EA



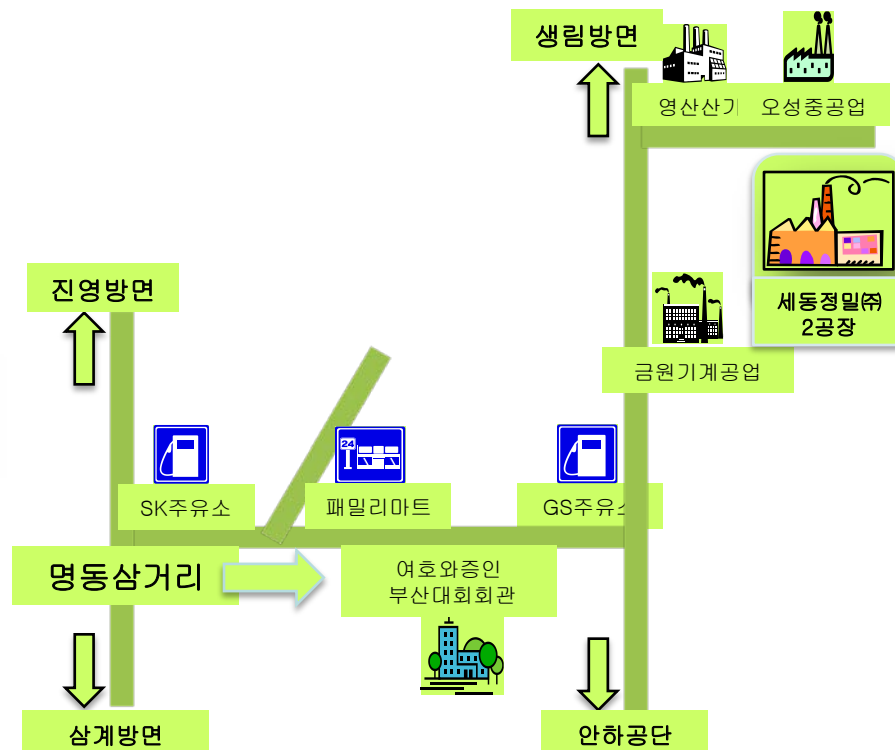
## 13. Company certificate

Category	Description	Certi. Object	Issued date	Certi. Authority
Quality Management sys.	ISO 9001:2000	Steel piping & Structure	1999.11.10	KSA-QA
Quality Environment sys.	ISO 14001:2009	Steel piping & Structure	2014.09.15	KSA
Quality Innovation	Single-PPM	ENGINE PIPE of Shipping (Class)	2007.01.25	Single-PPM Administration
	INNO-BIZ (A class)	SEDONG pre & mfg co., Ltd.	2007.04.06	Small & Medium business Administration
Shop Approval	Approval for welding shop	SEDONG pre & mfg co., Ltd.	1999.02.26	G.L
Welding Approval	Approval for WPS	GTAW / GTAW+FCAW / FCAW	1989~1991	GL, LR, BV
				DNV, ABS
	Approval for Welder	KUM-SOO, LEE 외 15명	2004.10.28	NK, KR, RINA
				CCS
Welding Approval	WPS & Welder (C/S, S/S, A/S)	GTAW, FCAW, GT+FC 6명	2012.10.10 2013.09.10	Posco e&c
Welding Approval	WPS & Welder (C/S, S/S, A/S)	GTAW, FCAW, GT+FC 9명	2014.09.20	Posco engineering

## The way to visit ...



**Head office / JU-CHON 1 Factory**  
 107-16 Seobu-ro 1409 Bun-gil Juchon-myun  
 Kimhae-city Kyungnam-do South Korea  
 TEL : 055) 338-7592~4 FAX : 055) 338-6187



**HAN-LIM 2 Factory**  
 52 Ahnha-ro 116Bun-gil Hnalim-myun  
 Kimhae-city Kyungnam-do South Korea  
 TEL : 055) 346-7595